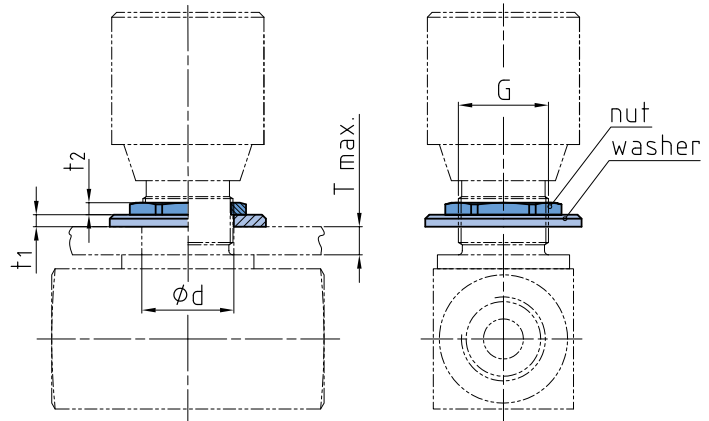
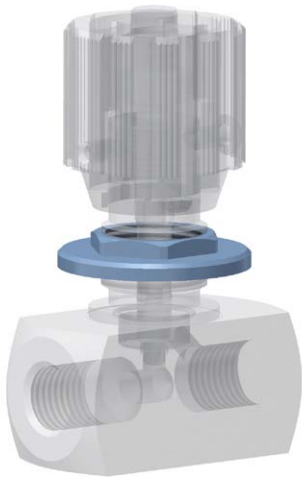


# Panel mounting kits



Detailed valve dimensions: page 196 to 203

DIMENSIONS							ORDER CODE
Type	T <sub>max</sub>	d	t <sub>1</sub>	t <sub>2</sub>	G*	Weight [kg]	
NDV/NDRV-DN6	4	13	2,5	2,8	PG7	0,01	28286
NDV/NDRV-DN8-10	7	19	3	3	PG11	0,02	10095
NDV/NDRV-DN12-16	7	23	3	3	PG16	0,02	10096
NDV/NDRV-DN20-25	10	38	5	4	PG29	0,09	10097

\*PG thread as per DIN 40430