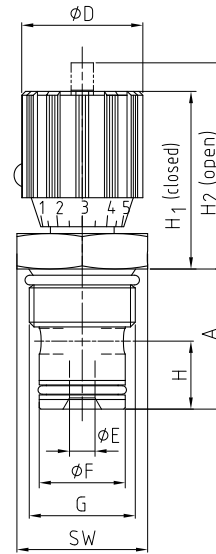


# Flow control valve for cartridge assembly Steel / Stainless steel

NDVE



## AVAILABLE SIZES

DN8 - DN16 (3/8" to 5/8")

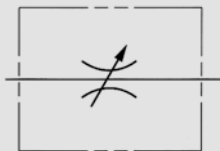
## MATERIAL CODE DESCRIPTION

| Materials   | 1A            | 18            | 4A              | 48              |
|-------------|---------------|---------------|-----------------|-----------------|
| Body        | Steel         | Steel         | Stainless Steel | Stainless Steel |
| O-rings     | NBR           | FPM           | NBR             | FPM             |
| Tmin / Tmax | -20°C / 100°C | -20°C / 100°C | -30°C / 100°C   | -20°C / 100°C   |

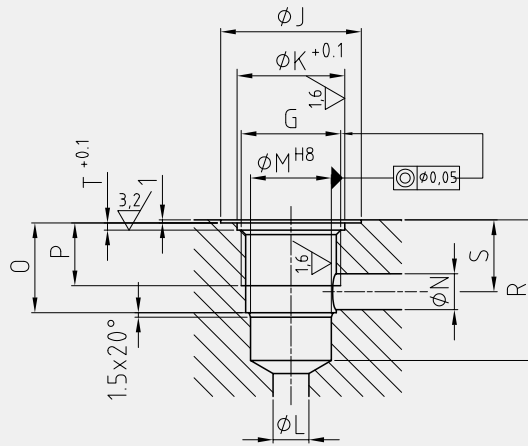
## GENERAL DIMENSIONS

| Type      | $H_1$ | $H_2$ | H    | A    | E | F  | SW | D  | Weight [kg] |
|-----------|-------|-------|------|------|---|----|----|----|-------------|
| NDVE-DN8  | 41    | 47    | 12   | 27,5 | 5 | 14 | 27 | 29 | 0,15        |
| NDVE-DN10 | 54    | 64    | 14,5 | 30,7 | 6 | 16 | 27 | 38 | 0,25        |
| NDVE-DN12 | 55    | 65    | 17,5 | 40   | 8 | 19 | 32 | 38 | 0,50        |
| NDVE-DN16 | 55    | 65    | 21,1 | 43,5 | 8 | 27 | 41 | 38 | 0,70        |

## PORTING PATTERN



## ASSEMBLY DIMENSIONS



| ASSEMBLY DIMENSIONS |                  |    |    |    |    |    |      |    |    |    |     | ORDER CODE PER MATERIAL COMBINATION |        |        |       |       |
|---------------------|------------------|----|----|----|----|----|------|----|----|----|-----|-------------------------------------|--------|--------|-------|-------|
| Type                | G <sup>(1)</sup> | J  | K  | L  | M  | N  | O    | P  | R  | S  | T   | PN [bar]                            | 1A     | 18     | 4A    | 48    |
| NDVE-DN8            | G1/2             | 32 | 24 | 5  | 14 | 5  | 17,5 | 14 | 29 | 15 | 1,9 | 350                                 | 17280* | 36703* | 37741 | 20531 |
| NDVE-DN10           | G1/2             | 32 | 24 | 8  | 16 | 8  | 20,5 | 14 | 33 | 17 | 1,9 | 350                                 | 15132* | 34216* | 29470 | 30968 |
| NDVE-DN12           | G3/4             | 37 | 30 | 10 | 19 | 10 | 29   | 21 | 43 | 24 | 1,9 | 350                                 | 17266* | 35285* | 22599 | 11946 |
| NDVE-DN16           | G1               | 47 | 36 | 12 | 27 | 12 | 30   | 21 | 47 | 24 | 2,4 | 350                                 | 20312* | 37742* | 29471 | 12069 |

<sup>(1)</sup> As per DIN ISO228

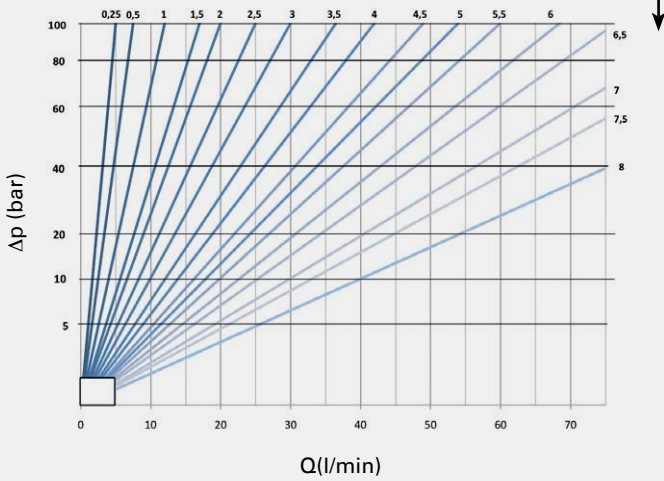
\*Article usually in stock.

**!** Flow control valves should not be used as shut-off device. Small leakage rates may occur in fully closed position. (DIN EN 12266 – leakage rate A-B – test medium water)

The flow values are valid for hydraulic oil (spissitude 880 kg/m<sup>3</sup>) and the kinematic viscosity  $\nu$  of 35 mm<sup>2</sup>/s.

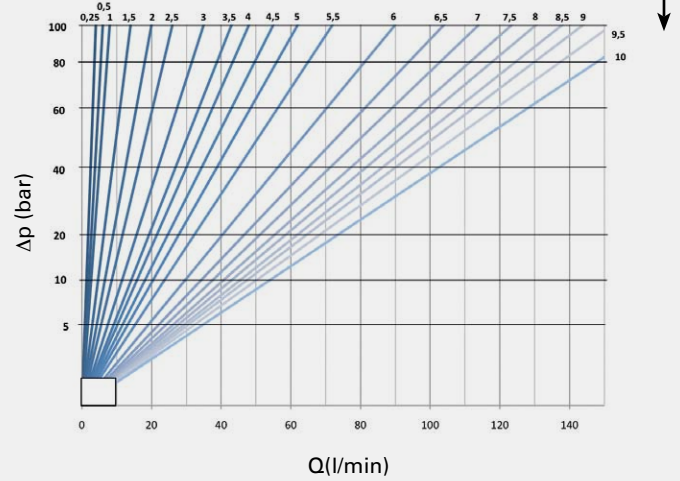
## NDVE-DN8

handle turns - the higher the number, the wider open the valve



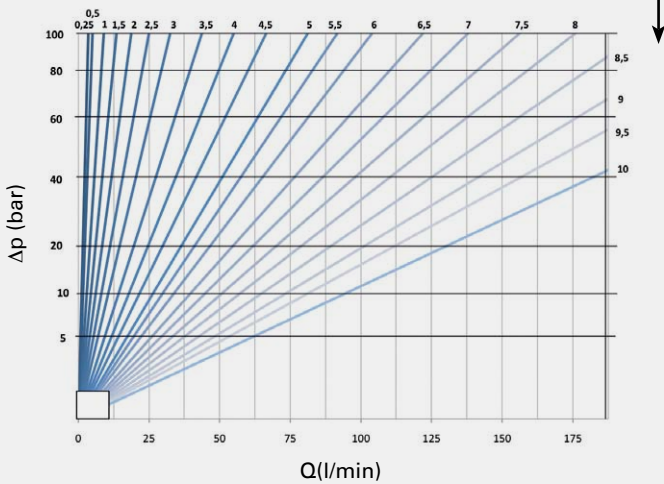
## NDVE-DN10

handle turns - the higher the number, the wider open the valve



## NDVE-DN12 - DN16

handle turns - the higher the number, the wider open the valve



Flow control