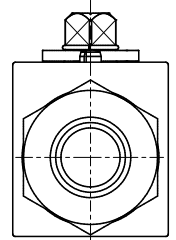
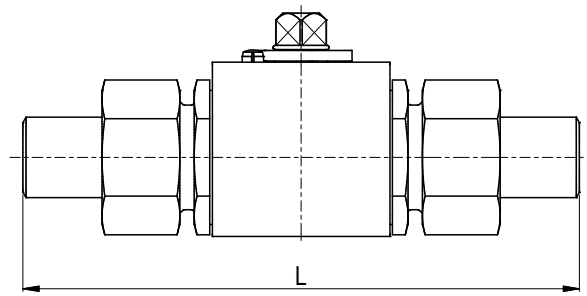
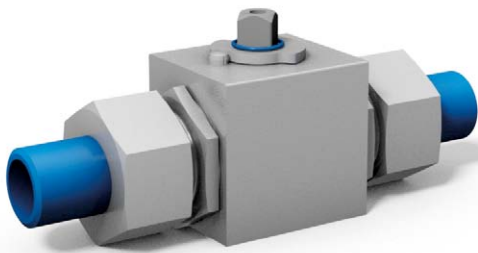


Ball valve with welding nipples

Steel / Stainless Steel

BKH-ASK



Two-way

CONNECTION TYPE	DIMENSIONS	PN PER MATERIAL
DIN 2353/ISO8434-1 LIGHT SERIES WITH WELDING NIPPLE	Type	Steel PN [bar] Stainless Steel PN [bar]
	BKH-DN8-10L-ASK10x1	249 242
	BKH-DN10-12L-ASK12x1,5	305 297
	BKH-DN13-15L-ASK15x2	315 315
	BKH-DN16-18L-ASK18x2,5	315 315
	BKH-DN20-22L-ASK22x2,5	160 160
	BKH-DN25-28L-ASK28x2,5	160 160
	BKH-DN25/32-35L-ASK35x3,5	160 160
	BKH-DN25/40-42L-ASK42x3	160 160

CONNECTION TYPE	DIMENSIONS	PN PER MATERIAL
DIN 2353/ISO8434-1 HEAVY SERIES WITH WELDING NIPPLE	Type	Steel PN [bar] Stainless Steel PN [bar]
	BKH-DN4-8S-ASK8x2	500 500
	BKH-DN6-10S-ASK10x2	460 447
	BKH-DN8-12S-ASK12x2	393 383
	BKH-DN10-14S-ASK14x2	343 334
	BKH-DN13-16S-ASK16x2	305 297
	BKH-DN16-20S-ASK20x2	249 242
	BKH-DN20-25S-ASK25x3	294 286
	BKH-DN25-30S-ASK30x3	249 242
	BKH-DN25/32-38S-ASK38x3	200 195

Other pipe dimensions, pressure ratings and material combinations on request.
Article numbers on request.