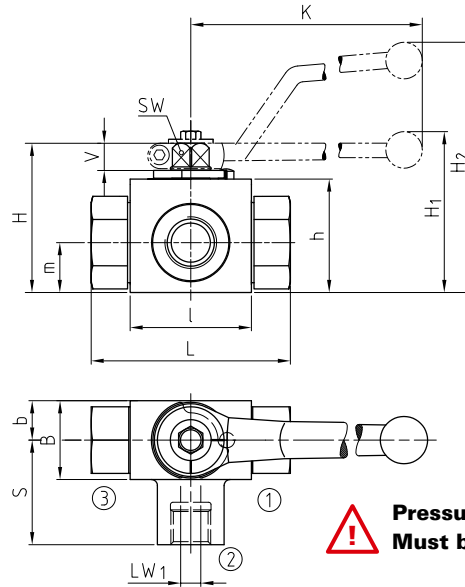
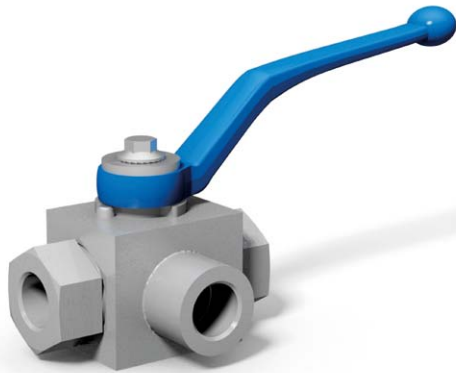


# Selector ball valve Steel

# BK3-S



**! Pressure inlet possible from all ports!  
Must be operated only at  $\Delta P=0$ bar!**

## AVAILABLE SIZES

DN4 - DN50 (1/8" to 2")

## CONNECTIONS

DIN ISO 228 Female thread, ANSI B1.20.1 NPT Female thread, DIN 2353/ISO 8434-1 Light / Heavy series, SAE J 514/ISO/DIS11926-1 Female thread, others on request

## ACCESSORIES ON REQUEST

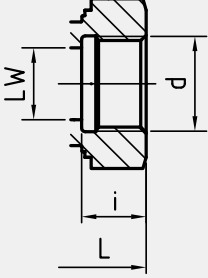
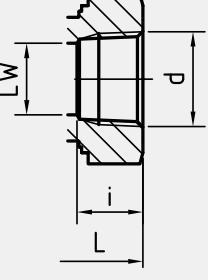
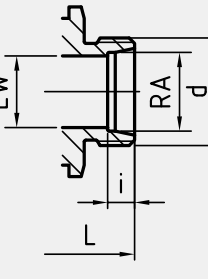
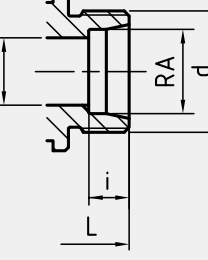
- Locking devices page 222 - 225
- Actuators 220 - 221
- Mounting holes 17
- Position switches 228 - 229
- Combinations 190 - 191
- Detent on request

## MATERIAL CODE DESCRIPTION

Materials	118A	118A	1188	1188
Body	Steel	Steel	Steel	Steel
Ball	Steel	Steel	Steel	Steel
Stem	Steel	Steel	Steel	Steel
Ball seats	POM	POM	POM	POM
O-rings	NBR	NBR	FPM	FPM
Tmin /Tmax	-20°C / 100°C	-20°C / 100°C	-20°C / 100°C	-20°C / 100°C
Porting pattern	L=SB55	T=SB56	L=SB55	T=SB56

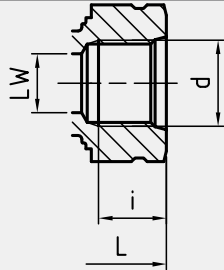
## GENERAL DIMENSIONS

Type	l	b	B	H	h	m	V	SW	K	H <sub>1</sub>	H <sub>2</sub>	Lever
BK3-S-DN4	40	13	29	47	33	13,5	11	9	115	-	82	Zn
BK3-S-DN6	40	13	29	47	33	13,5	11	9	115	-	82	Zn
BK3-S-DN8	40	13	29	47	33	13,5	11	9	115	-	82	Zn
BK3-S-DN10	43	16	35	52	38	17,5	11	9	115	-	86	Zn
BK3-S-DN13	48	17,5	38	54	40	19	11	9	115	-	89	Zn
BK3-S-DN20	62	24,5	52	75	57	24,5	14	14	200	79	-	Zn
BK3-S-DN25	66	29	61	83	65	29,5	14	14	200	87	-	Zn
BK3-S-DN25/32	66	29	61	83	65	29,5	14	14	200	87	-	Zn
BK3-S-DN32	81	39	-	106	84,5	39	16,5	17	320	115	-	Al
BK3-S-DN40	104	53	-	127	106	53	16,5	17	320	136	-	Al
BK3-S-DN50	118	58	116	137	116	58	16,5	17	320	146	-	Al

CONNECTION TYPE	DIMENSIONS								ORDER CODE PER MATERIAL COMBINATION					
<b>DIN ISO 228 FEMALE THREAD</b>	Type	LW	L	S	LW <sub>1</sub>	i	d	Weight [Kg]	PN [bar]	118A L=SB55	118A T=SB56	1188 L=SB55	1188 T=SB56	
	BK3-S-DN4-G1/8	5	69	34,5	4	10	G1/8	0,40	500	02543*	02569*	38007*	38022*	
	BK3-S-DN6-G1/4	6	69	34,5	6	14	G1/4	0,46	500	20039*	02572*	04330*	38023*	
	BK3-S-DN10-G3/8	10	72	36	10	14	G3/8	0,60	500	00902*	20119*	04102*	38024*	
	BK3-S-DN13-G1/2	13	83	41,5	13	16,3	G1/2	0,70	315	02554*	02580*	27347*	28639*	
	BK3-S-DN13-G5/8	13	83	41,5	13	16	G5/8	0,70	315	02557*	38018*	38008*	38025*	
	BK3-S-DN20-G3/4	20	95	47,5	20	18	G3/4	1,80	315	02717*	02767*	19972*	09399*	
	BK3-S-DN25-G1	25	113	56,5	25	20	G1	2,40	315	02720*	02779*	38009*	11954*	
	BK3-S-DN25/32-G1 1/4	25	120	57	25	22	G1 1/4	2,64	315	02723*	02780*	38010*	38026*	
	BK3-S-DN32-G1 1/4	30	111	55	30	22	G 1 1/4	4,80	350	38013*	38019*	33276*	38027*	
	BK3-S-DN40-G1 1/2	38	130	65	38	24	G 1 1/2	8,90	350	30040*	38020*	38011*	38028*	
	BK3-S-DN50-G2	48	150	75	48	26	G2	12,40	350	38006*	38021*	38012*	38029*	
<b>ANSI B1.20.1 NPT FEMALE THREAD</b>	Type	LW	L	S	LW <sub>1</sub>	i	d	Weight [Kg]	PN [bar]	118A L=SB55	118A T=SB56	1188 L=SB55	1188 T=SB56	
	BK3-S-DN4-1/8" NPT	5	69	34,5	4	10,5	1/8" NPT	0,40	500	40224*	40225*	40226*	40227*	
	BK3-S-DN6-1/4" NPT	6	69	34,5	6	13,7	1/4" NPT	0,46	500	34885*	38058*	38041*	38059*	
	BK3-S-DN10-3/8" NPT	10	72	36	10	13,5	3/8" NPT	0,60	500	14368*	38060*	38042*	38061*	
	BK3-S-DN13-1/2" NPT	13	83	41,5	13	17	1/2" NPT	0,70	315	28281*	38062*	38043*	38063*	
	BK3-S-DN20-3/4" NPT	20	95	47,5	20	18,3	3/4" NPT	1,80	315	38035*	38064*	28242*	38065*	
	BK3-S-DN25-1" NPT	25	113	56,5	25	21,6	1" NPT	2,40	315	38036*	38066*	38044*	38067*	
	BK3-S-DN25/32-1 1/4" NPT	25	120	57,5	25	22,1	1 1/4" NPT	2,64	315	38037*	38068*	38045*	38069*	
	BK3-S-DN32-1 1/4" NPT	30	120	60	30	22,1	1 1/4" NPT	5,24	350	38038*	38070*	38046*	38071*	
	BK3-S-DN40-1 1/2" NPT	38	140	70	38	22,1	1 1/2" NPT	10,00	350	38039*	38072*	38047*	38073*	
	BK3-S-DN50-2" NPT	48	150	75	48	30,2	2" NPT	12,20	350	38040*	38074*	38048*	38075*	
<b>DIN 2353 / ISO 8434-1 LIGHT SERIES</b>	Type	LW	RA	L	S	LW <sub>1</sub>	i	d	Weight [Kg]	PN [bar]	118A L=SB55	118A T=SB56	1188 L=SB55	1188 T=SB56
	BK3-S-DN4-6L	5	6	67	33,5	4	7	M 12x1,5	0,30	500	02541*	02567*	04271*	37979*
	BK3-S-DN6-8L	6	8	67	33,5	6	7	M 14x1,5	0,40	500	02544*	02570*	04251*	37980*
	BK3-S-DN8-10L	8	10	74	34,5	8	7	M 16x1,5	0,40	500	02548*	02574*	37973*	37981*
	BK3-S-DN10-12L	10	12	74	36,5	10	7	M 18x1,5	0,50	500	04801*	37977*	04803*	37982*
	BK3-S-DN13-15L	13	15	82	41	13	7	M 22x1,5	0,65	315	02552*	02578*	04116*	37983*
	BK3-S-DN13-18L	13	18	82	41,5	13	7,5	M 26x1,5	0,69	315	02555*	37978*	33246*	37984*
	BK3-S-DN20-22L	20	22	101	48	20	7,5	M 30x2	1,50	315	20287*	02765*	37974*	37985*
	BK3-S-DN25-28L	25	28	108	54	25	7,5	M 36x2	2,10	315	02718*	02777*	37975*	37986*
	BK3-S-DN25/32-35L	25	35	112	56	25	10,5	M 45x2	2,50	315	02721*	02782*	37976*	37987*
<b>DIN 2353 / ISO 8434-1 HEAVY SERIES</b>	Type	LW	RA	L	S	LW <sub>1</sub>	i	d	Weight [Kg]	PN [bar]	118A L=SB55	118A T=SB56	1188 L=SB55	1188 T=SB56
	BK3-S-DN4-8S	5	8	73	34,5	4	7	M 16x1,5	0,42	500	02542*	02568*	37989*	37996*
	BK3-S-DN6-10S	6	10	73	34,5	6	7,5	M 18x1,5	0,43	500	02545*	02571*	37990*	37997*
	BK3-S-DN8-12S	8	12	76	34,5	8	7,5	M 20x1,5	0,44	500	02547*	02573*	37991*	37998*
	BK3-S-DN10-14S	10	14	80	36,5	10	8	M 22x1,5	0,50	500	04782*	02577*	37992*	37999*
	BK3-S-DN13-16S	13	16	86	43	13	8,5	M 24x1,5	0,65	315	02553*	02579*	37993*	38000*
	BK3-S-DN13-20S	13	20	90	43	15	10,5	M 30x2	0,70	315	20288*	36377*	29921*	38001*
	BK3-S-DN20-25S	20	25	109	48	20	12	M 36x2	1,70	315	10073*	02766*	04955*	38002*
	BK3-S-DN25-30S	25	30	120	57,5	25	13,5	M 42x2	2,40	315	02719*	02778*	37994*	38003*
	BK3-S-DN25/32-38S	25	38	124	57,5	25	16	M 52x2	2,80	315	02722*	02781*	32489*	38004*

Please note the pressure ratings of the tube connections!

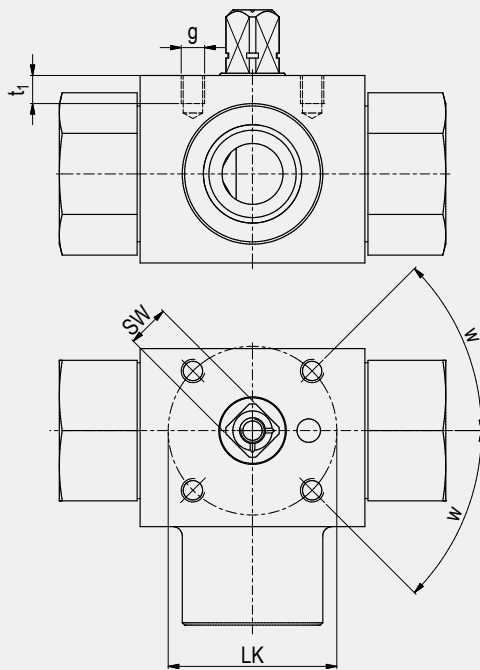
\*Article usually in stock.

CONNECTION TYPE	DIMENSIONS								ORDER CODE PER MATERIAL COMBINATION				
	Type	LW	L	S	LW <sub>1</sub>	i	d	Weight [Kg]	PN [bar]	118A L=SB55	118A T=SB56	1188 L=SB55	1188 T=SB56
 SAE J514/ISO/DIS11926-1 FEMALE THREAD	BK3-S-DN6-7/16"UNF	5	69	34,5	6	12	7/16"-20 UNF	0,50	500	38084*	38104*	38089*	38109*
	BK3-S-DN10-9/16"UNF	10	72	36	7,5	13	9/16"-18 UNF	0,60	500	38085*	38105*	38090*	38110*
	BK3-S-DN13-3/4"UNF	13	83	41,5	13	15	3/4"-16 UNF	0,70	315	38086*	38106*	38091*	38111*
	BK3-S-DN20-1 1/16"UN	20	105	47,5	16	20	1 1/16"-12 UN	1,80	315	38087*	38107*	38092*	38112*
	BK3-S-DN25-1 5/16"UN	25	113	56,5	21	20	1 5/16"-12 UN	2,70	315	38088*	38108*	38093*	38113*
	BK3-S-DN32-1 5/8"UN	30	111	60	30	20	1 5/8"-12 UN	5,20	350	39226*	39227*	39228*	39229*
	BK3-S-DN40-1 7/8"UN	38	140	70	38	20	1 7/8"-12 UN	10,00	350	39230*	39231*	39232*	39233*
	BK3-S-DN50-2 1/2"UN	48	150	75	48	20	2 1/2"-12 UN	12,20	350	39234*	39235*	39236*	39237*

Please note the pressure ratings of the tube connections!

\*Article usually in stock.

Due to material availability the material code of the steel valves may vary from 118A (1188). DN20-32=818A (8188), DN40-50=218A (2188). Material suitability for the application does not differ from 118A (1188).



### ASSEMBLING THREADS AS PER ISO 5211

DN	SW	LK	g	t <sub>1</sub>	w	ISO 5211
4	9	36	M5	6	30°*	(F03)*
6	9	36	M5	6	30°*	(F03)*
10	9	36	M5	7	45°	F03
13	9	36	M5	6	45°	F03
16	12	42	M5	8	45°	F04
20	14	50	M6	10	45°	F05
25	14	50	M6	10	45°	F05
25/32	14	50	M6	10	45°	F05
25/40	14	50	M6	10	45°	F05

\*30° does not correspond to ISO 5211

### PORTING PATTERNS



**Pressure inlet possible from all ports!**  
**Must be operated only at ΔP=0bar!**

Further porting patterns page 262 to 267

### FLOW CHARACTERISTICS BK3S-L/T

