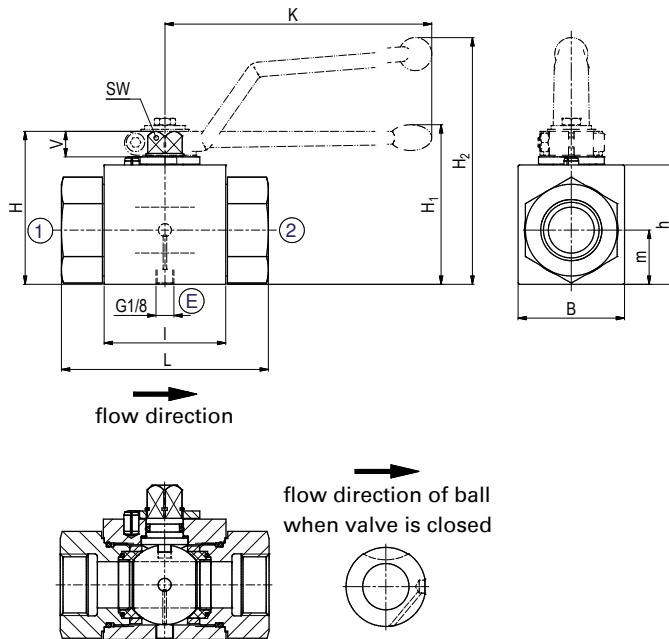
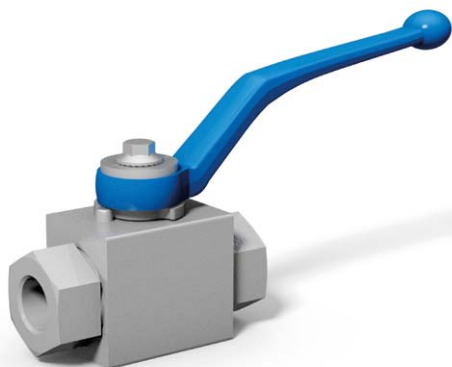


Ball valve with venting hole Steel

BKH



AVAILABLE SIZES

DN4 - DN25 (1/8" to 1")

CONNECTIONS

DIN ISO 228 Female thread, ANSI B1.20.1 NPT Female thread, DIN 2353/ISO 8434-1 Light / Heavy series, SAE J 514/ISO/DIS11926-1 Female thread, others on request.

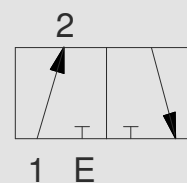
ACCESSORIES ON REQUEST

- Locking devices page 222 - 225
- Actuators 220 - 221
- Mounting holes 17
- Position switches 228 - 229
- Combinations 184 - 186
- Detent on request

MATERIAL CODE DESCRIPTION

Materials	118A	1188
Body	Steel	Steel
Ball	Steel	Steel
Stem	Steel	Steel
Ball seats	POM	POM
O-rings	NBR	FPM
Tmin / Tmax	-20°C / 100°C	-20°C / 100°C

PORTING PATTERN



GENERAL DIMENSIONS

Type	l	B	H	h	m	V	SW	K	H ₁	H ₂	Lever
BKH-DN4	40	26	47	33	13,5	11	9	115	-	82	Zn
BKH-DN6	40	26	47	33	13,5	11	9	115	-	82	Zn
BKH-DN8	40	26	47	33	13,5	11	9	115	-	82	Zn
BKH-DN10	43	32	52	38	17,5	11	9	115	-	86	Zn
BKH-DN13	48	35	54	40	19	11	9	115	-	89	Zn
BKH-DN20	62	49	75	57	24,5	14	14	200	79	-	Zn
BKH-DN25	66	58	83	65	29,5	14	14	200	87	-	Zn
BKH-DN25/32	66	58	83	65	29,5	14	14	200	87	-	Zn
BKH-DN25/40	66	58	83	65	29,5	14	14	200	87	-	Zn

Ball valve with venting hole Steel

BKH

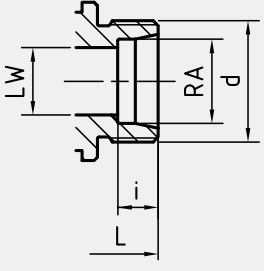
CONNECTION TYPE	DIMENSIONS						ORDER CODE PER MATERIAL COMBINATION			
DIN ISO 228 FEMALE THREAD	Type	LW	L	i	d	Weight [Kg]	PN [bar]	118A	1188	
	BKH-DN4-G1/8	5	69	10	G1/8	0,42	500	38974	38982	
	BKH-DN6-G1/4	6	69	14	G1/4	0,42	500	38975	38983	
	BKH-DN10-G3/8	10	72	14	G3/8	0,55	500	38976	38984	
	BKH-DN13-G1/2	13	83	16,3	G1/2	0,66	500	38977	30389	
	BKH-DN20-G3/4	20	95	18	G3/4	1,51	420	38978	30449	
	BKH-DN25-G1	25	113	20	G1	2,21	315	38979	35266	
	BKH-DN25/32-G1 1/4	25	120	22	G1 1/4	2,31	315	38980	38985	
	BKH-DN25/40-G1 1/2	25	130	24	G1 1/2	2,61	315	38981	38986	
ANSI B1.20.1 NPT FEMALE THREAD	Type	LW	L	i	d	Weight [Kg]	PN [bar]	118A	1188	
	BKH-DN4-1/8"NPT	5	69	10,5	1/8" NPT	0,31	500	38987	38995	
	BKH-DN6-1/4"NPT	6	69	13,7	1/4" NPT	0,41	500	38988	38996	
	BKH-DN10-3/8"NPT	10	72	13,5	3/8" NPT	0,56	500	38989	38997	
	BKH-DN13-1/2"NPT	13	83	17	1/2" NPT	0,76	500	38990	38998	
	BKH-DN20-3/4"NPT	20	95	18,3	3/4" NPT	1,64	420	38991	38999	
	BKH-DN25-1"NPT	25	113	21,6	1" NPT	2,31	315	38992	39000	
	BKH-DN25/32-1 1/4"NPT	25	120	22,1	1 1/4" NPT	2,52	315	38993	39001	
	BKH-DN25/40-1 1/2"NPT	25	130	22,1	1 1/2" NPT	2,66	250	38994	39002	
DIN 2353 / ISO 8434-1 LIGHT SERIES	Type	LW	RA	L	i	d	Weight [Kg]	PN [bar]	118A	1188
	BKH-DN4-6L	5	6	67	7	M12x1,5	0,37	500	38940	38949
	BKH-DN6-8L	6	8	67	7	M14x1,5	0,38	500	38941	38950
	BKH-DN8-10L	8	10	74	7	M16x1,5	0,39	500	38942	38951
	BKH-DN10-12L	10	12	74	7	M18x1,5	0,51	500	38943	38952
	BKH-DN13-15L	13	15	82	7	M22x1,5	0,62	500	38944	38953
	BKH-DN20-22L	20	22	101	7,5	M30x2	1,50	420	38945	38954
	BKH-DN25-28L	25	28	108	7,5	M36x2	2,10	315	38946	38955
	BKH-DN25/32-35L	25	35	112	10,5	M45x2	2,13	315	38947	38956
BKH-DN25/40-42L	25	42	112	11	M52x2	2,28	315	38948	38957	

Please note the pressure ratings of the tube connections!

Application-specific

Ball valve with venting hole Steel

BKH

CONNECTION TYPE	DIMENSIONS							ORDER CODE PER MATERIAL COMBINATION		
	Type	LW	RA	L	i	d	Weight [Kg]	PN [bar]	118A	1188
DIN 2353 / ISO 8434-1 HEAVY SERIES 	BKH-DN4-8S	5	8	73	7	M16x1,5	0,39	500	38958	38966
	BKH-DN6-10S	6	10	73	7,5	M18x1,5	0,40	500	38959	38967
	BKH-DN8-12S	8	12	76	7,5	M20x1,5	0,40	500	38960	38968
	BKH-DN10-14S	10	14	80	8	M22x1,5	0,51	500	38961	38969
	BKH-DN13-16S	13	16	86	8,5	M24x1,5	0,61	500	38962	38970
	BKH-DN20-25S	20	25	109	12	M36x2	1,56	420	38963	38971
	BKH-DN25-30S	25	30	120	13,5	M42x2	2,11	315	38964	38972
	BKH-DN25/32-38S	25	38	124	16	M52x2	2,31	315	38965	38973

CONNECTION TYPE	DIMENSIONS							ORDER CODE PER MATERIAL COMBINATION		
	Type	LW	L	i	d	Weight [Kg]	PN [bar]	118A	1188	
SAE J514/ISO/DIS11926-1 FEMALE THREAD 	BKH-DN6-7/16" UNF	5	69	12	7/16"-20 UNF	0,40	500	39003	39008	
	BKH-DN10-9/16" UNF	10	72	13	9/16"-18 UNF	0,55	500	39004	39009	
	BKH-DN13-3/4" UNF	13	83	15	3/4"-16 UNF	0,66	500	39005	39010	
	BKH-DN20-1 1/16" UN	20	95	20	1 1/16"-12 UN	1,58	420	39006	39011	
	BKH-DN25-1 5/16" UN	25	113	20	1 5/16"-12 UN	2,30	315	39007	39012	

Please note the pressure ratings of the tube connections!