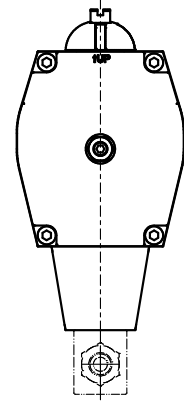
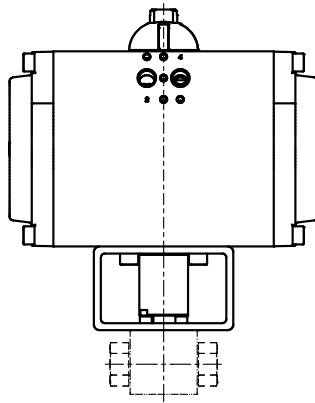


Ball valves with pneumatic actuator



The dimensioning of the actuators is based on the extensive experience of **MHA ZENTGRAF**. When making a request, it is absolutely necessary to specify the working pressure, service medium and operating temperature, to enable us to configure the actuators for your application. Furthermore the following product code defines all used components for the actuator configuration:

ORDER EXAMPLE

order text (ball valve design: see data sheets)	article no.	mode of operation	control pressure [bar]	limit switch box	solenoid valve	version																				
BKH - DN4 - G1/8 - 112A	20639	PA																								
		<table border="1"> <tr><td>DW</td><td>double acting</td></tr> <tr><td>EW</td><td>single acting</td></tr> </table>	DW	double acting	EW	single acting		<table border="1"> <tr><td>M</td><td>mechanical</td></tr> <tr><td>I</td><td>inductive</td></tr> <tr><td>O</td><td>without</td></tr> </table>	M	mechanical	I	inductive	O	without	<table border="1"> <tr><td>DC</td><td>24V DC</td></tr> <tr><td>AC</td><td>230V AC</td></tr> <tr><td>O</td><td>without</td></tr> </table>	DC	24V DC	AC	230V AC	O	without	<table border="1"> <tr><td>ST</td><td>standard</td></tr> <tr><td>EX</td><td>EX-version: please specify required EX-zone (EX-level)</td></tr> </table>	ST	standard	EX	EX-version: please specify required EX-zone (EX-level)
DW	double acting																									
EW	single acting																									
M	mechanical																									
I	inductive																									
O	without																									
DC	24V DC																									
AC	230V AC																									
O	without																									
ST	standard																									
EX	EX-version: please specify required EX-zone (EX-level)																									