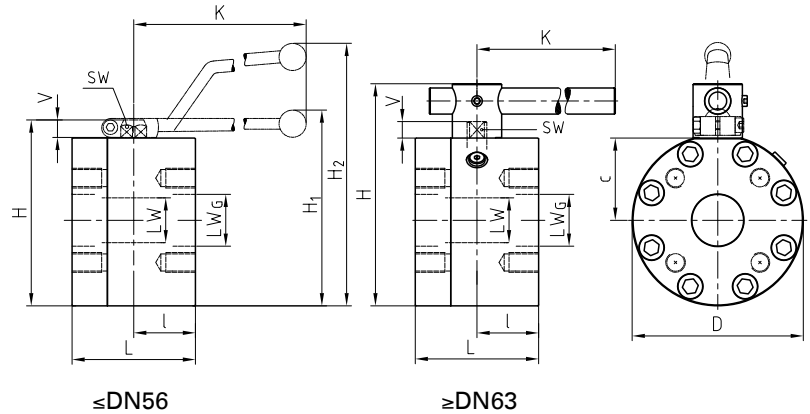


Flange ball valve with ISO connection Steel

KH-ISO



AVAILABLE SIZES

DN13 - DN200 (1/2" to 8")

CONNECTIONS

ISO 6164-1 (ISO250), ISO 6164-2 (ISO400), ISO320 (not part of ISO 6164)

ACCESSORIES ON REQUEST

- Locking devices page 222 - 226
- Actuators 220 - 221
- Mounting holes on request
- Position switches on request
- Combinations on request
- Detent on request

MATERIAL CODE DESCRIPTION

Materials	DN15-50 212A	DN15-50 2128	DN65-200 282A	DN65-200 2828
Body	Steel	Steel	Steel	Steel
Ball	Steel	Steel	Steel	Steel
Stem	Steel	Steel	Duplex	Duplex
Ball seats	POM	POM	POM	POM
O-rings	NBR	FPM	NBR	FPM
Tmin / Tmax	-10°C / 100°C	-10°C / 100°C	-10°C / 100°C	-10°C / 100°C

GENERAL DIMENSIONS ISO 6164-1 (ISO250)

Type	LW	LW _G	L	I	D	H	c	V	K	SW	H ₁	H ₂	Lever
KH-DN13	15	15	85	45	78	83	31	13	160	12	-	127	Al
KH-DN19	20	20	88	38	119	110	36,5	14	200	14	114	-	Zn
KH-DN25	25	25	88	38	126	117	39,5	14	200	14	120	-	Zn
KH-DN32	32	32	105	50	145	158	68	17	320	17	167	-	Al
KH-DN38	38	38	110	55	165	178	78	17	320	17	187	-	Al
KH-DN51	48	47	116	58	198	210	94	17	320	17	219	-	Al
KH-DN56	48	58	123	58	198	210	94	17	320	17	219	-	Al
KH-DN63	65	70	150	75	208	270	100	20	600	16	-	-	St ⁽¹⁾

GENERAL DIMENSIONS ISO 6164-2 (ISO400)

Type	LW	LW _G	L	I	D	H	c	V	K	SW	H ₁	H ₂	Lever
KH-DN13	15	14	85	45	78	83	31	13	160	12	-	127	Al
KH-DN19	20	18	88	38	119	110	36,5	14	200	14	114	-	Zn
KH-DN25	25	22	88	38	126	117	39,5	14	200	14	120	-	Zn
KH-DN32	32	29	105	50	145	158	68	17	320	17	167	-	Al
KH-DN38	38	35	110	55	165	178	78	17	320	17	187	-	Al
KH-DN51	48	43	123	58	198	210	94	17	320	17	219	-	Al
KH-DN56	48	53	123	58	198	210	94	17	320	17	219	-	Al
KH-DN63	65	58	150	75	224	286	108	20	600	16	-	-	St ⁽¹⁾
KH-DN70	65	63	150	75	224	286	108	20	600	16	-	-	St ⁽¹⁾
KH-DN80 (PN100)	76	74	140	70	228	293	107	26	600	19	-	-	St ⁽¹⁾
KH-DN80 (PN400)	76	76	170	78	258	315	114,5	26	600	19	-	-	St ⁽¹⁾

Please note the pressure ratings of the connection flanges!

⁽¹⁾ Lever must be fixed centrally during operation. In case of vibration the lever may otherwise operate the valve by itself.

GENERAL DIMENSIONS ISO 320 (not part of ISO 6164)



Type	LW	LW _G	L	I	D	H	c	V	K	SW	H ₁	H ₂	Lever
KH-DN15													
													on request
KH-DN20	20	20	88	38	119	110	36,5	14	200	14	114	-	Zn
KH-DN25	25	25	88	38	126	117	39,5	14	200	14	120	-	Zn
KH-DN32	32	32	105	50	145	158	68	17	320	17	167	-	Al
KH-DN40	38	38	110	55	165	178	78	17	320	17	187	-	Al
KH-DN50	48	48	122	58	198	210	94	17	320	17	219	-	Al
KH-DN65	65	63	150	75	208	270	100	20	600	16	-	-	St ⁽¹⁾
KH-DN80 (PN100)	76	76	140	70	215	279	100	26	600	19	-	-	St ⁽¹⁾
KH-DN80 (PN350)	76	76											refer to KH-DN80-ISO400 (PN400)
KH-DN100	100	100	200	100	260	327	122	26	900	24	-	-	St ⁽¹⁾
KH-DN125	118	118	230	110	390	470	185	32	900	36	-	-	St ⁽¹⁾
KH-DN150	150	150	285	130	390	475	190	32	900	36	-	-	St ⁽¹⁾
KH-DN200	192	200	378	150	456	598	223	61	940	46	-	-	St ⁽¹⁾

Please note the pressure ratings of the connection flanges!

⁽¹⁾ Lever must be fixed centrally during operation. In case of vibration the lever may otherwise operate the valve by itself.

Flange ball valve with ISO connection Steel

KH-ISO

CONNECTION TYPE

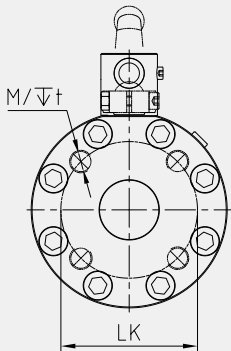
DIMENSIONS

ORDER CODE PER MATERIAL COMBINATION

ISO 6164-1

Type	LK	M	t	Weight [Kg]
------	----	---	---	-------------

PN [bar]	212A (282A)	2128 (2828)
----------	-------------	-------------



KH-DN13-ISO250	42 ⁽¹⁾	4 x M8	16	2,90	350	29452	37481
KH-DN19-ISO250	50	4 x M8	15	6,80	350	29453	37482
KH-DN25-ISO250	62	4 x M10	20	7,20	315	29455	37483
KH-DN32-ISO250	73	4 x M12	21	12,50	250	40654	37484
KH-DN38-ISO250	85	4 x M16	24,5	16,60	250	29538	37485
KH-DN51-ISO250	98	4 x M16	25,5	24,90	250	37839	37486
KH-DN56-ISO250	118	4 x M20	33	26,60	250	36011	37487
KH-DN63-ISO250	145	4 x M20	33	36,90	250	31638	37488

CONNECTION TYPE

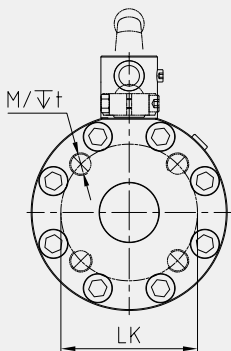
DIMENSIONS

ORDER CODE PER MATERIAL COMBINATION

ISO 6164-2

Type	LK	M	t	Weight [Kg]
------	----	---	---	-------------

PN [bar]	212A (282A)	2128 (2828)
----------	-------------	-------------



KH-DN13-ISO400	42 ⁽¹⁾	4 x M8	16	2,90	400	37842	37849
KH-DN19-ISO400	50	4 x M8	15	6,80	400	37843	37850
KH-DN25-ISO400	62	4 x M10	20	7,20	400	37844	37851
KH-DN32-ISO400	73	4 x M12	21	12,50	400	37845	37852
KH-DN38-ISO400	85	4 x M16	24,5	16,60	400	19556	37853
KH-DN51-ISO400	98	4 x M16	25,5	24,90	400	37846	37854
KH-DN56-ISO400	118	4 x M20	31	26,60	400	36010	37855
KH-DN63-ISO400	145	4 x M24	37,5	42,53	400	31493	15045
KH-DN70-ISO400	160	4 x M24	37,5	43,00	315	37847	37856
KH-DN80-ISO400 (PN100)	175	4 x M30	35	51,00	100	37848	37857
KH-DN80-ISO400 (PN400)	175	4 x M30	48,5	63,00	400	58109	58110

CONNECTION TYPE

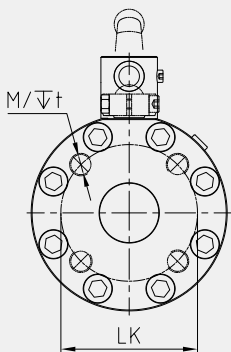
DIMENSIONS

ORDER CODE PER MATERIAL COMBINATION

ISO 320
(NOT PART OF ISO 6164)

Type	LK	M	t	Weight [Kg]
------	----	---	---	-------------

PN [bar]	212A (282A)	2128 (2828)
----------	-------------	-------------



KH-DN15-ISO320	54	4 x M10	on request		350	37827	37830
KH-DN20-ISO320	64	4 x M12	22	6,80	350	37459	37463
KH-DN25-ISO320	72	4 x M12	20	7,20	350	37828	37831
KH-DN32-ISO320	80	4 x M16	24	12,50	350	37460	37464
KH-DN40-ISO320	98	4 x M16	25	16,60	350	37461	37465
KH-DN50-ISO320	118	4 x M20	28	24,90	350	37462	37466
KH-DN65-ISO320	145	4 x M24	36	36,00	350	19987	37467
KH-DN80-ISO320 (PN100)	175	4 x M30	35	34,26	100	16635	32093
KH-DN100-ISO320	200	8 x M24	36	70,00	350	34178	37468
KH-DN125-ISO320	245	8 x M30	45	209,00	350	37829	37832
KH-DN150-ISO320	245	8 x M30	46	225,00	350	45938	41962
KH-DN200-ISO320	315	8 x M36	55	395,00	350	41393	41965

⁽¹⁾ rotated by 45°

BYPASS OPTION



When larger ball valves have to be activated at full differential pressure, a smaller ball valve can be used before activation in order to equalize the pressure.

We combine the bypass within the flange valve body to provide less leakage points compared to a piped solution.

- Both main and bypass valve can be offered with locking device or any other accessory like limit switches or actuators.
- Bypass is a standard manifold mounting PKH valve which can be easily maintained or replaced
- Bypass manifold mounting valve provides bubble tight shut off.