

AVAILABLE SIZES

DN8 (3/8"), DN13 (1/2"), DN25 (1")

CONNECTIONS

DIN ISO 228 Female thread, ANSI B1.20.1 NPT Female thread, SAE J514/ISO/DIS11926-1 Female thread, DIN 2353 / ISO 8434-1 Heavy series, C&T Medium Pressure, UNEF Male (double ferrule), others on request

ACCESSORIES ON REQUEST

- Locking devices
- Actuators
- Mounting holes
- Position switches
- Combinations
- Detent

MATERIAL CODE DESCRIPTION

Materials	44g8
Body	1.4571
Ball	1.4571 / Nitronic-50®
Stem	Nitronic-50®
Ball seats	PEEK
Body and stem sealing	FKM / PTFE*
Tmin / Tmax	-40°C / +85°C*

*Others on request.

CERTIFICATION

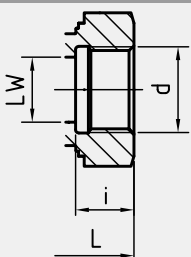
ATEX IIC (H ₂), Ex-zone 1, 2G	
Fire-safe DIN EN ISO 10497	
TPED ISO 23826 (for DN8 only)	
DIN EN ISO 15848-1 (low emission)	
SIL 2 (IEC 61508 / ISO 13849-1)	

GENERAL DIMENSIONS

Type	l	B	H	h	m	Vmin	SW	a	g	t	K	H1	Lever
HFKH650-DN8	75,5	38	74,5	46	16,5	11	8	60	Ø6,5	8	152	94,5	St
HFKH650-DN13	85	49	85,5	57	24,5	11	8	70	Ø6,5	8	152	105,5	St
HFKH650-DN25	120	78	128,5	97	39	13,5	12	104	Ø9	17	202	151,1	St

CONNECTION TYPE

DIN ISO 228
FEMALE THREAD



DIMENSIONS

Type	LW	L	i	d	Weight [Kg]
HFKH650-DN8-G 1/4	8	105,1	14	G 1/4	1,34
HFKH650-DN13-G 1/2	13	124,6	16,3	G 1/2	2,35
HFKH650-DN25-G 1	25	159,6	20	G 1	7,83

ORDER CODE PER MATERIAL COMBINATION

PN [bar]	44g8
650	on request
650	on request
650	on request

CONNECTION TYPE	DIMENSIONS							ORDER CODE PER MATERIAL COMBINATION			
	Type	LW	L	i	d	Weight [Kg]	PN [bar]	44g8			
	HFKH650-DN8-1/4" NPT	8	105,1	13,7	1/4" NPT	1,34	650	76973			
	HFKH650-DN13-1/2" NPT	13	124,6	17	1/2" NPT	2,36	650	76974			
	HFKH650-DN25-1" NPT	25	159,6	21,6	1" NPT	7,85	650	76975			
	Type	LW	L	i	d	Weight [Kg]	PN [bar]	44g8			
	HFKH650-DN8-9/16" UNF	8	105,1	13	9/16"-18 UNF	1,33	650	on request			
	HFKH650-DN13-3/4" UNF	13	124,6	15	3/4"-16 UNF	2,36	650	on request			
	HFKH650-DN25-1 5/16" UN	25	159,6	20	1 5/16"-12 UN	7,81	650	on request			
	Type	LW	RA	L	i	d	Weight [Kg]	PN [bar]	44g8		
	HFKH650-DN8-12S	8	12	113,1	7,5	M 20x1,5	1,29	650	on request		
	HFKH650-DN13-16S	13	16	128,6	8,5	M 30x2	2,19	650	on request		
	HFKH650-DN13/15-20S	15	20	133	10,5	M 30x2	2,25	650	80746		
HFKH650-DN25-30S	25	30	179,6	13,5	M 42x2	7,71	650	on request			
	Type	LW	L	i	d	d1	d2	l	Weight [Kg]	PN [bar]	44g8
	HFKH650-DN8-9/16" C&T	8	121,1	11,2	13/16-16UN	12,7	7,8	19,1	1,37	650	80304
	HFKH650-DN13-3/4" C&T	13	154,6	12,7	3/4-14NPSM	15,7	11,1	23,9	2,61	650	80306
	HFKH650-DN13-1" C&T	13	164,6	20,6	1 3/8-12UNF	22,4	14,3	33,3	2,65	650	on request
HFKH650-DN25-1 1/2" C&T	25	219,6	25,4	1 7/8-12UNF	35	23,8	40,5	9,30	650	79493	
	Type	LW	L	i	d	d1	d2	α	Weight [Kg]	PN [bar]	44g8
	HFKH650-DN8-3/4-20 UNEF	8	113,7	12,8	3/4-20 UNEF	15	12,1 (metric) 12,7 (imperial)	40°	1,40	650	on request

Please note the pressure ratings of the tube connections!