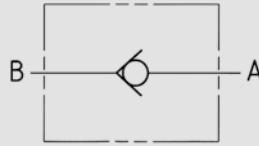


PORTING PATTERN



CERTIFICATION

ATEX IIC (H2), Ex-zone 1, 2G



CONNECTIONS

DIN ISO 228 Female thread, ANSI B1.20.1 NPT Female thread, SAE J514/ISO/DIS11926-1 Female thread, DIN 2353 / ISO 8343-1 Heavy series, C&T medium Pressure, others on request

AVAILABLE SIZES

DN8 (3/8"), DN13 (1/2")

MATERIAL

Body	1.4571
Seats	PEEK
Tmin /Tmax	-40°C / +85°C
Cracking pressure	as required

PRESSURE RATING

PN 1034 bar

Ball valve accessories

HFKH500, HFKH650 and HFKH1000

Wide range of accessories available

- Actuators – pneumatic, electric, hydraulic
- Position indicators
- Mounting holes
- Locking devices
- Detents
- Manifold integration

